



Correlation of Wound Bed Score and Its Reduction Rate (pilot project)

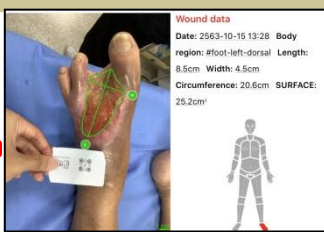


Rattana Pianchareonsin¹, Gulradar Sivasarit², Benjawan Worawitnoppakul², Tipyanee Thinwilai²,
¹APN – Peripheral Arterial Disease, ²RN Vascular Wound Care Nurse Team,
 Nursing Department Siriraj Hospital, Siriraj Vascular Center

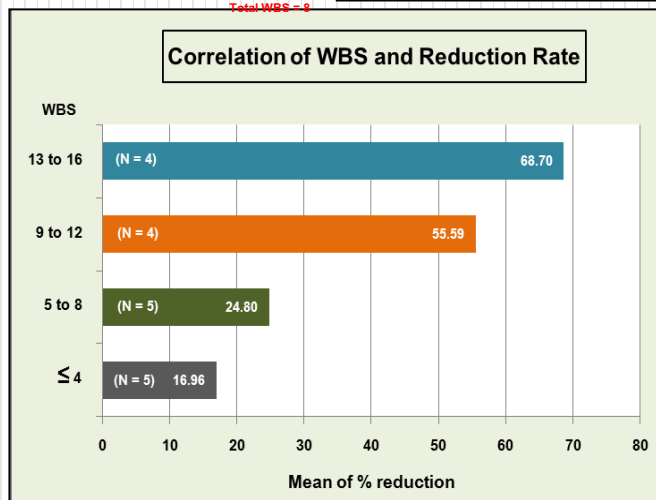
Abstract: Efficient wound bed preparation is very important for wound healing, and includes of decreasing the bacterial burden, removing necrotic tissue, controlling exudate, and promoting granulation tissue⁽¹⁻²⁾. We use the wound bed score (WBS) to evaluate outcome of wound bed preparation in 18 ischemic ulcer patients after revascularization. We evaluated the photographs at baseline to determine the wound characteristics. The study show that WBS system can predict closure in wounds treatment⁽³⁾. In conclusion the best result of wound bed preparation will promote to increase in WBS score and will reduce the duration of wound healing. In the case of vascular patients, nurses need to select the best practice of Wound Bed Preparation, especially for patients taking antiplatelet. 0.1% polyhexanide-betaine gel is the appropriate choice for the management of wound bed score in these patients.

no	area 1	area 2	WBS	Start date	End date	Duration (m)	% Reduction
1	52.9	0	5	8-Feb-21	30-Jun-21	4.73	21.13
2	56.3	0	3	10-Apr-21	4-Nov-21	6.93	14.42
3	11.9	0	15	17-Jun-21	9-Aug-21	1.77	56.60
4	2.3	0	15	4-Feb-21	11-Mar-21	1.17	85.71
5	16.8	4.6	7	20-Apr-21	19-Jul-21	3.00	24.21
6	7.5	0	13	17-Jun-21	4-Aug-21	1.60	62.50
7	6.16	0.2	8	21-Jan-21	1-Jun-21	4.37	22.16
8	34.5	15	4	25-Feb-21	20-May-21	2.80	20.19
9	4.9	1.7	14	26-Aug-21	23-Sep-21	0.93	69.97
10	35.3	32.5	4	19-Aug-21	2-Sep-21	0.47	17.00
11	30	23.2	3	12-Jul-21	19-Aug-21	1.27	17.89
12	21.4	13	3	19-Aug-21	4-Nov-21	2.57	15.29
13	6.5	1	11	19-Jun-21	4-Aug-21	1.53	55.18
14	25.2	0	8	16-Oct-20	18-Jan-21	3.13	31.91
15	29.5	0.5	6	15-Mar-21	13-Jul-21	4.00	24.58
16	27.5	0	11	15-Apr-21	5-Jun-21	1.70	58.82
17	3.7	0	9	19-Aug-21	3-Oct-21	1.50	66.67
18	5.7	3.8	9	10-Oct-21	3-Nov-21	0.80	41.67

Wound Bed Score (WBS)			
	Scores of 0	Scores of 1	Scores of 2
Black Eschar	0	1	2
Excoriation/Dermatitis	0	1	2
Depth	0	1	2
Scarring (fibrotic/ulcer)	0	1	2
Color of wound bed	0	1	2
Oedema/Swelling	0	1	2
Revascularizing epithelium	0	1	2
Exudate Amount	0	1	2
Add scores for each column			
TOTAL SCORE (Max=18)			



Total WBS = 9



Limitation: Evaluation of the photographs was performed by co-study, not blinded observer and involve to the project. Further studies are going to develop guideline of wound dressing selection base on WBS.

References

1. Falanga V. Classifications for wound bed preparation and stimulation of chronic wounds. *Wound Repair Regen* 2000; 8: 347-352.
2. Brem H, Balledux J, Sukkariet T, Carson P, Falahga V. Healing of venous ulcers of long duration with a bi layered living skin substitute: results from a general surgery and dermatology department. *Dermatol Surg* 2001; 27: 915-919.
3. Falanga V, Saap LJ, Ozonoff A. Wound bed score and its correlation with healing of chronic wounds. *Dermatol Ther* 2006; 19: 383-390